

## Description

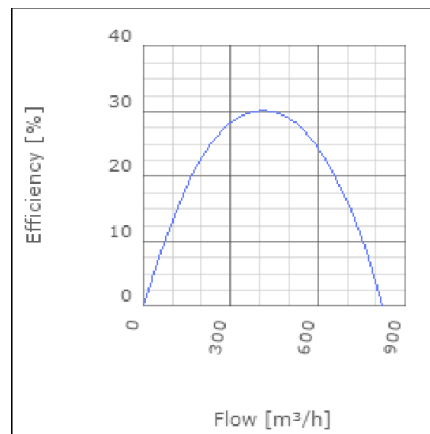
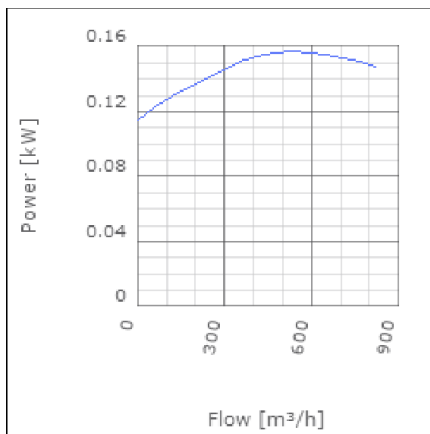
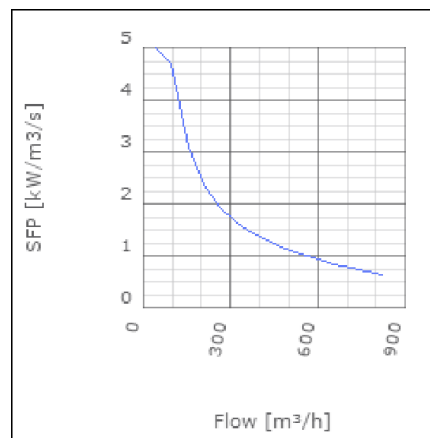
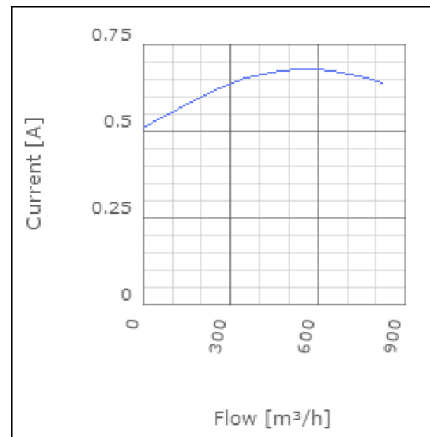
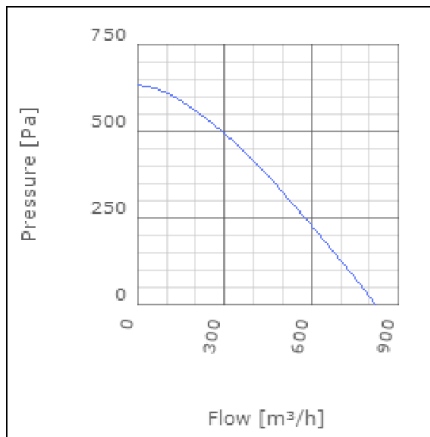
IRE is a range of insulated in-line centrifugal duct fans. They provide high pressure with low sound level. The IRE fans have good sound and fire insulation qualities provided by a 50mm pad of mineral wool. The high quality ball bearing mounted external rotor motors are maintenance free. They can be speed controlled from 0-100% by voltage variation. All motors are protected by approved thermo contacts. All 3-phase motors have ready fitted thermo contact leads for alarm functions etc. The fans have a strong galvanized steel housing incorporating a swing out design of the fan motor and impeller for easy cleaning and inspection.



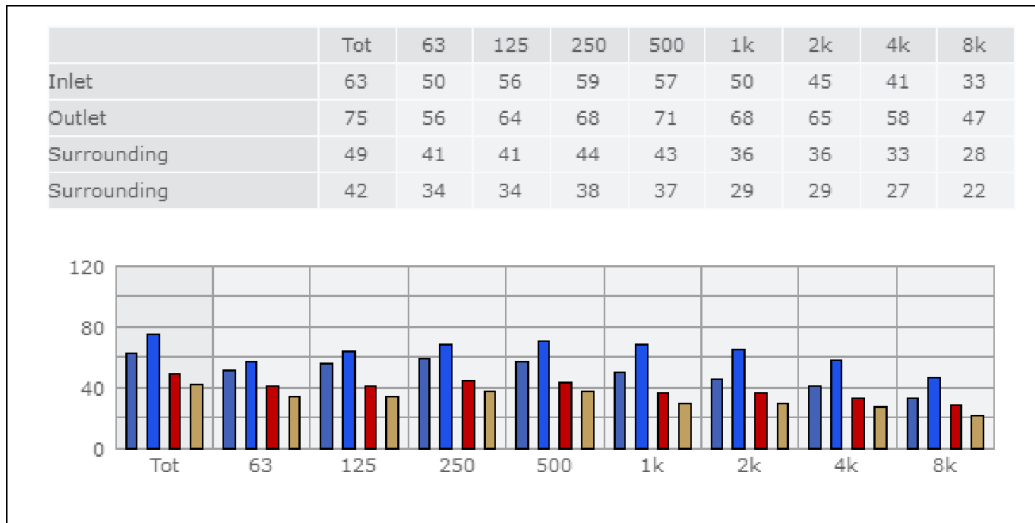
## Technical data

Parameter	Value	Unit
Voltage	230	V
Phase	1	~
Frequency	50	Hz
Power	0.16	kW
Current	0.69	A
R.p.m.	2600	r/m
Max. temperature of transported air	75	°C
Max. temperature of transported air when speed-controlled	75	°C
Sound pressure level at 3 m	42	dB(A)
Length	532	mm
Width	489	mm
Height	308	mm
Weight	22	kg
Enclosure class, motor	44	IP
Insulation class, motor	F	
Capacitor	4	µF
Duct connection	ø200 mm	

Diagrams



Sound



**Parameter**

Distance: 3.000  
 Propagation type: Hemi-spherical  
 Equivalent absorption area: 20.00

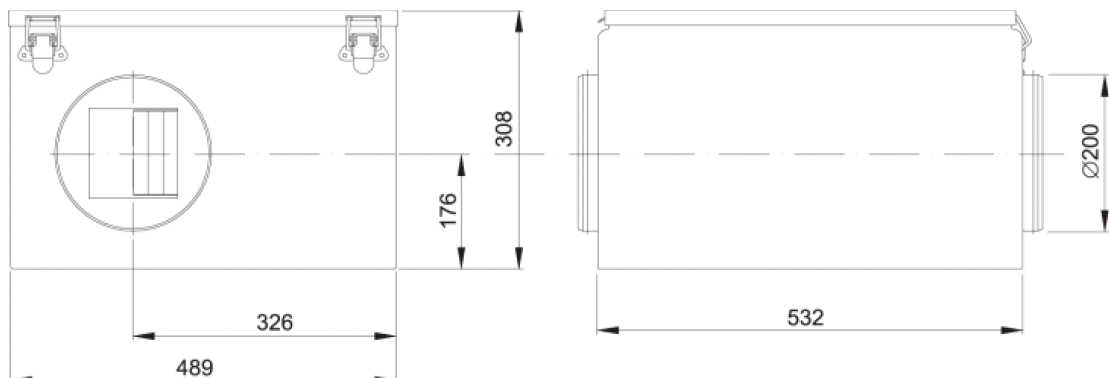
**Checked point**

Flow 330.935m<sup>3</sup>/h  
 Static pressure 472Pa

**Working point**

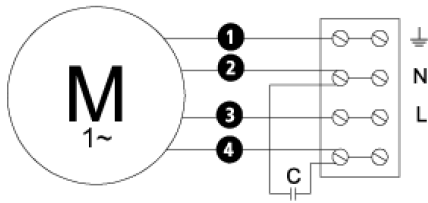
Flow 331.707m<sup>3</sup>/h  
 Static Pressure 474Pa  
 Power 0.15kW  
 Speed 0r/m  
 Current 0.65A  
 Voltage 230V  
 Efficiency 29.338%  
 SFP 0kW/m<sup>3</sup>/s

Dimensions



## Wiring diagram

4040001



- (M)** = Fan Motor
- (M1)** = Fan Motor
- (M2)** = Fan Motor
- (M3)** = Rotor Motor
- 1** = Yellow/Green
- 2** = Black
- 3** = Blue
- 4** = Brown
- 5** = White (TW)
- 6** = Orange
- 7** = Grey
- 8** = Red
- 9** = Green
- 10** = Violet

## Accessories

ETFV-94A  
 FRE 6  
 VRDE 1,5  
 VRS 1,0  
 VRTEC

## Electrical accessories

FLF 200  
 FLK 200  
 BSV 200  
 YG 200  
 LDC 200